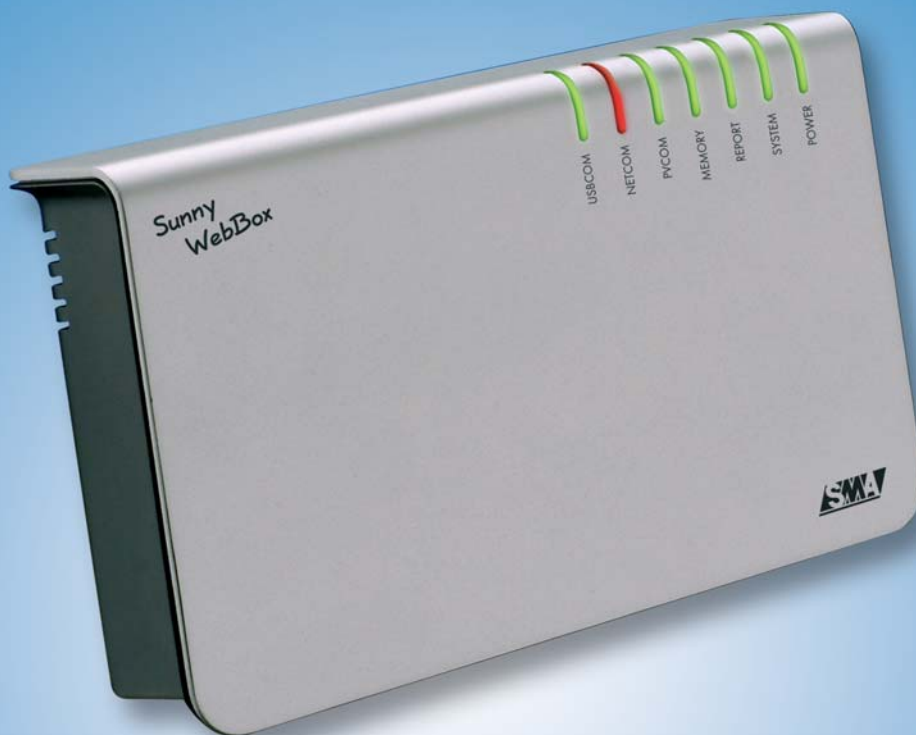


Sunny WebBox



The professional data logger for your solar power plant



Continuously monitors your solar power system

Automatically reports system status

Records and stores plant power production data

Exports stored data for evaluation or use in spread sheets

Perform diagnostics and system configuration using any PC: Windows, Linux and Mac OS

Automatic data transfer to Sunny Portal in selectable intervals

Free data preparation and graphic display via the internet

Compatible with all SMA inverters

Monitoring, remote system configuration, diagnostics, data storage and graphic display: The Sunny WebBox is the communication center for your solar power plant. All inverter data is continuously logged which allows you to obtain the current status of your system at anytime - from anywhere. The multifunction data-logger provides various options for the display, storage and export of plant performance data.

The WebBox is the ultimate choice for all PV system owners who desire the very best in system management and data logging.

For more information visit:
www.SMA.de

Professional system monitoring made easy

System management

The Sunny WebBox continuously records and stores all available data of up to 50 inverters in real time: from the current values to the event channels. In addition, the inverter parameters can be requested and modified. This allows you to centrally adjust the parameters from the WebBox, for example.

The Sunny WebBox allows you to attain the status of your solar power system at any time and to detect operational failures at an early stage. Regardless of your location, whether you are at home, at the office or on a business trip, all you need to access the WebBox data is a PC with an internet browser and a connection to the World Wide Web.

The Sunny WebBox and the inverters communicate with each other via Powerline or RS485.

Data management

The Sunny WebBox provides you with various modern data processing options for professional data management. The recorded performance values, which provide you with detailed information on the performance of your system, are saved in conventional CSV or XML file formats on the WebBox. The ability to exchange data by FTP allows you to easily transfer these values to your PC. This way, not only can valuable system data be saved on your computer for the long-term, but also be displayed according to your preferences

using MS Excel, for example, and detailed evaluations of daily, monthly and yearly energy yields can be created.

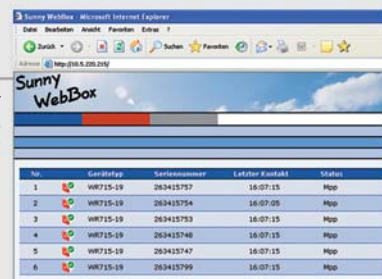
You can just as easily use an SD card to save your data and transfer it between the WebBox and your PC. If an SD card is inserted, the WebBox no longer saves the data in the internal memory, but rather automatically saves it on the removable storage medium. Once you have read the data from the SD card using your PC, you have the identical individual options for processing it as with FTP.

The next step to even more convenience is to use the Sunny WebBox in combination with our free internet portal. At www.SunnyPortal.com, we provide you with a complete pre-configured environment in which the data can be saved, pro-



Communication with the inverters via the serial interface (RS485) and Powerline (via SWR-COM USB)

Integrated web server for **remote online access** to the current data from any PC



Eye-catching presentation of the plant data using the Sunny Matrix large-scale display

Integrated FTP server for saving and transferring data to a PC



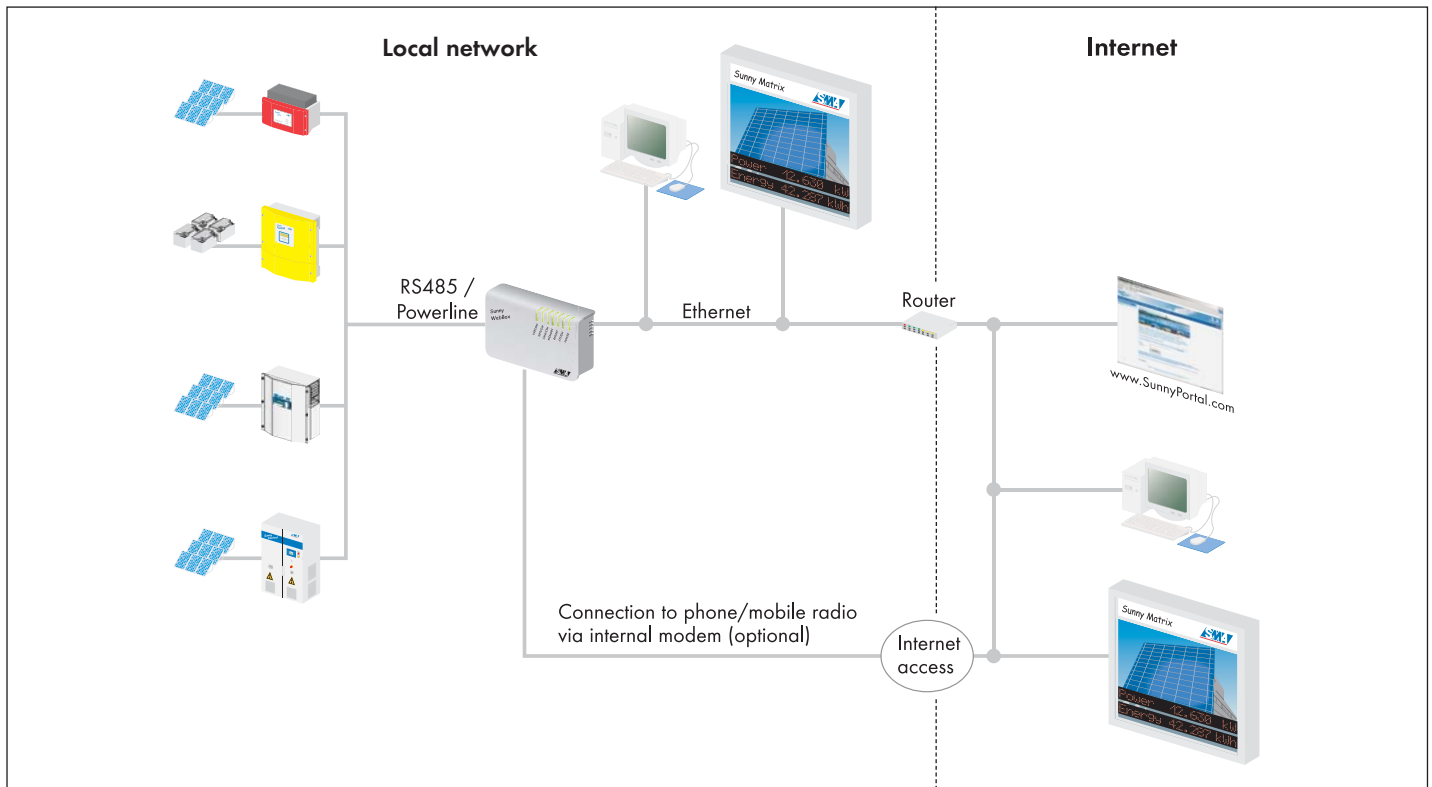
Free and automatic **storage** and **visualization** of the measuring data in Sunny Portal

Individual processing of the measuring data on your own PC

TimeStamp	h-Totals	Fac	Fehler	h-Totals	Fac	h-Totals	Fac
07:15	848.79	50.03	0	10292.29	0	41	
07:30	848.79	50.03	0	10292.29	0	37	
07:45	848.79	50.03	0	10292.29	0	47	
08:00	848.79	50.03	0	10292.29	0	47	
08:15	848.79	50.03	0	10292.29	0	47	
08:30	848.79	50.03	0	10292.29	0	47	
08:45	848.79	50.03	0	10292.29	0	47	
09:00	848.79	50.03	0	10292.29	0	47	
09:15	848.79	50.03	0	10292.29	0	47	
09:30	848.79	50.03	0	10292.29	0	47	
09:45	848.79	50.03	0	10292.29	0	47	
10:00	848.79	50.03	0	10292.29	0	47	



Memory expansion and data transfer to a PC using a removable SD card



cessed and displayed, even without requiring your help.

If desired, the Sunny Portal also generates a daily or monthly plant report that you receive by email. The portal also informs you if the WebBox reports a failure. The data can also be sent in the other direction, so that even the WebBox software

can be automatically updated via the portal. This ensures that your plant monitoring is always kept up-to-date with the latest technology.

Technical data

Interfaces

Inverter communication	RS485 (up to 50 inverters, max. 1,200 m cable) Powerline (up to 50 inverters, max. 1,000 m cable)
Modem	Internal, analog modem (optional)
Ethernet	Ethernet / Fast Ethernet connection Connection to your LAN network, Sunny Matrix and Sunny Portal

Memory expansion

SD card	from 16 MB
---------	------------

Dimensions

Width/height/depth (mm)	225 / 130 / 57
Weight	750 g

Power supply

Plug-in power supply	115 V – 230 V 50/60 Hz
Power consumption	typically 4 W max. 12 W

Environmental conditions in operation

Ambient temperature	-20° C to 65° C
Relative air humidity	5 % to 95 %, non-condensing

General data

Status display	built-in LED's
Applicability	Wall-mounted or desktop device

SMA's Family of Communication Solutions



Sunny Portal

- Free interactive access to your solar power system
- Storage and individual visualization of your system data
- Remote monitoring, status and failure reports
- System presentation on the internet



Sunny Boy Control

- Monitoring, remote diagnosis and long-term recording of inverter operating data
- Communication with inverters via RS232, RS485 or Powerline
- Daily/hourly status report
- Suitable for all systems regardless of size



Sunny Matrix

- Large-scale display for PV systems
- Dimensions: 800 x 400 mm to 800 x 1000 mm
- Weather-proof, wall-mounting
- Ethernet connection to Sunny WebBox
- Custom artwork
- Day and night function
- Variable display output: energy yield, air temperature, time, scrolling text with message etc.
- Character height: 51 mm



Sunny Beam

- Wireless plant monitoring
- Wireless communication with the inverters
- USB port for data transfer to the PC
- Power supplied via integrated solar cell

SMA Technologie AG
 Hannoversche Strasse 1-5
 34266 Niestetal, Germany
 Phone: +49 561 9522 4000
 Fax: +49 561 9522 4040
 Email: Info@SMA.de
 Freecall: +800 SUNNYBOY
 Freecall: +800 78669269



Order your free catalog at: www.SMA.de

Supplied by:



www.SMA.de

